





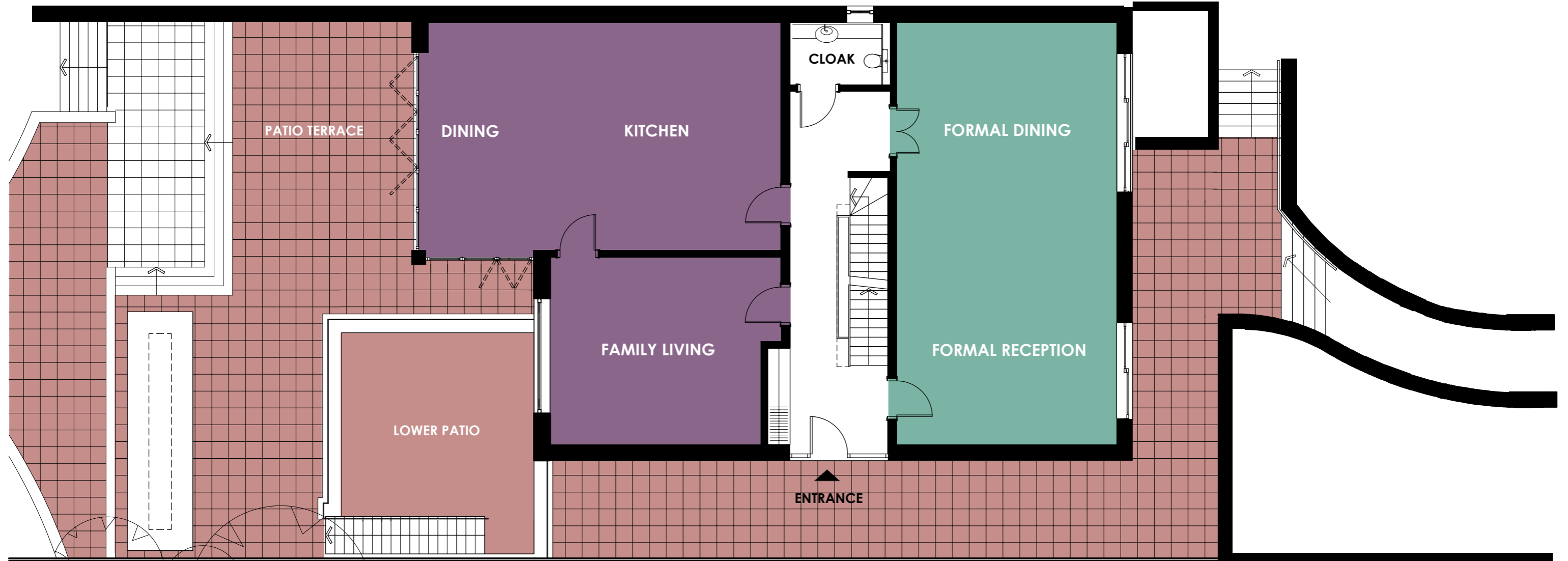


**10 VIEW ROAD  
HOUSE 3**  
HIGHGATE, LONDON, N6  
**LOWER GROUND FLOOR**  
[APPROX. 376.53 m<sup>2</sup>/ 4,052.94 sq.ft.]

**TOTAL AREA OF HOUSE 3**  
[APPROX. 836.99 m<sup>2</sup>/ 9,009.28 sq.ft.]




Dimensions shown are indicative and  
Will require re-measure as built drawings.  
[Not to scale]

-  INFORMAL LIVING AREAS
-  OUTDOOR TERRACES
-  RECREATION AREAS
-  SLEEPING AREAS
-  UTILITY AREAS



**10 VIEW ROAD**  
**HOUSE 3**  
HIGHGATE, LONDON, N6  
**GROUND FLOOR**  
[APPROX. 191.89 m<sup>2</sup> / 2,065.49 sq.ft.]



Dimensions shown are indicative and  
Will require re-measure as built drawings.  
[Not to scale]

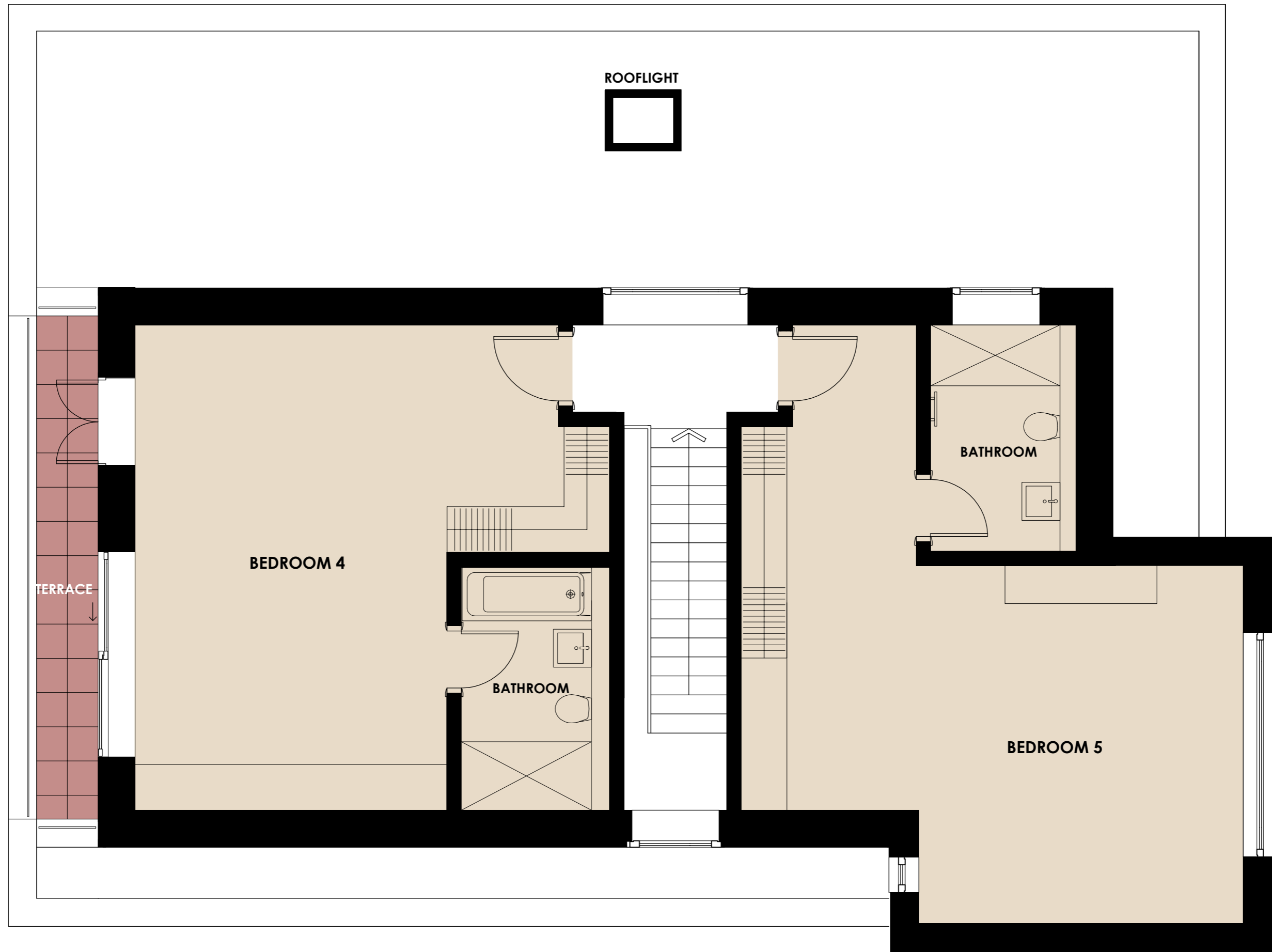
-  FORMAL LIVING AREAS
-  INFORMAL LIVING AREAS
-  OUTDOOR TERRACES



**10 VIEW ROAD**  
**HOUSE 3**  
HIGHGATE, LONDON, N6  
**FIRST FLOOR**  
[APPROX. 175.61 m<sup>2</sup> / 1,890.25 sq.ft.]

Dimensions shown are indicative and  
Will require re-measure as built drawings.  
[Not to scale]

 OUTDOOR TERRACES  
 SLEEPING AREAS



ROOFLIGHT

BEDROOM 4

BATHROOM



BATHROOM

BEDROOM 5

TERRACE

**10 VIEW ROAD**  
**HOUSE 3**  
HIGHGATE, LONDON, N6  
**SECOND FLOOR**  
[APPROX. 92.96 m<sup>2</sup>/ 1,000.61 sq.ft.]

Dimensions shown are indicative and  
Will require re-measure as built drawings.  
[Not to scale]

 OUTDOOR TERRACES  
 SLEEPING AREAS